

A  
K

115MM QUADCORE KINGSPAN KS1000RW ROOF PANEL  
FIXED TO TOP-HAT SUPPORTS USING 3NO. EJOT CF19  
JT3-D6H-5.5 x 147 MERLIN GREY HEAD  
FIXINGS PER PANEL PER SUPPORT  
**RAL 180 40 05 MERLIN GREY XL FORTE**

GUTTER SUPPORT ARM AT MAX  
666MM CTRS.

2MM THICK X 50MM DEEP GALV STEEL TOP-HAT PROFILE  
SPANNING PERPENDICULAR TO ROOF SLOPE AND FIXED TO 25MM  
DEEP GALV TOP-HATS BELOW. CENTRED ON PRIMARY STEEL  
TOPHATS FIXED TO DECK USING 2 NO. EJOT JT3 6 6.3 x 25 S16  
FIXINGS, ONE INTO EACH SIDE OF TOPHAT AT SUPPORT  
LOCATIONS.

2MM THICK X 25MM DEEP GALV STEEL TOP-HAT  
PROFILE RIVETTED TO D46 DECK USING FIXFAST  
DF2-SS-LS-A15-6.3 x 25MM WASHERED SCREW  
. INSTALLED AT 1500MM CTRS. ACROSS ROOF  
SPANNING DOWN THE LINE OF THE DECK CROWN.  
RIVETTED EACH SIDE OF TOPHAT AT 450MM CTRS.

STITCHING SCREWS AT MAX  
666MM CTRS.

0.7MM THICK PRE-COAT STEEL GUTTER PROFILE  
FIXED TO GUTTER SUPPORT ARM AND U/S TOP  
SHEET WHERE SHOWN AT MAX 666MM CTRS.  
PROFILE TBC  
**MERLIN GREY.**

STITCHING SCREWS AT 200MM  
MAX CTRS.

613 SOP

9MM X 3MM BUTYL RUBBER  
SEALANT TO PERIMETER OF  
CROWN

2NO. STITCHING  
SCREWS PER VALLEY

900

200

200

▽ + 22.347

98

100

31

115

50

25

46

GUN GRADE SEAL AT PANEL  
JOINT INLINE WITH INTERNAL  
AIR SEAL

20X9 FOAM TAPE

UPDATED INTENT DRAWINGS  
REQUIRED FOR INTERNAL  
GUTTER AS PER COMMENTS  
ON CRL DRAWINGS

OUTLET & RWPS SHOWN  
INDICATIVE.

328

PIR INSULATION BETWEEN FLASHING AND  
SUPPORT ANGLE

0.7MM THICK PRE-COAT STEEL FLASHING  
FIXED TO FACE OF COMPOSITE PANEL AT  
450MM CTRS.  
**RAL 080 70 05 GOOSEWING GREY XL FORTE**

9X3 BUTYL

1.5MM GALV STEEL SUPPORT ANGLE FIXED  
TO EAVES RAIL AT 450MM CTRS. USING FLAT  
HEAD TEK SCREW TO SUPPORT PANEL  
JOINT.

100

▽ + 21.996

POWERLON VCL BETWEEN DECK  
AND TOP HAT DRESSED INTO  
SECONDARY ROOF GUTTER AND  
SEALED.

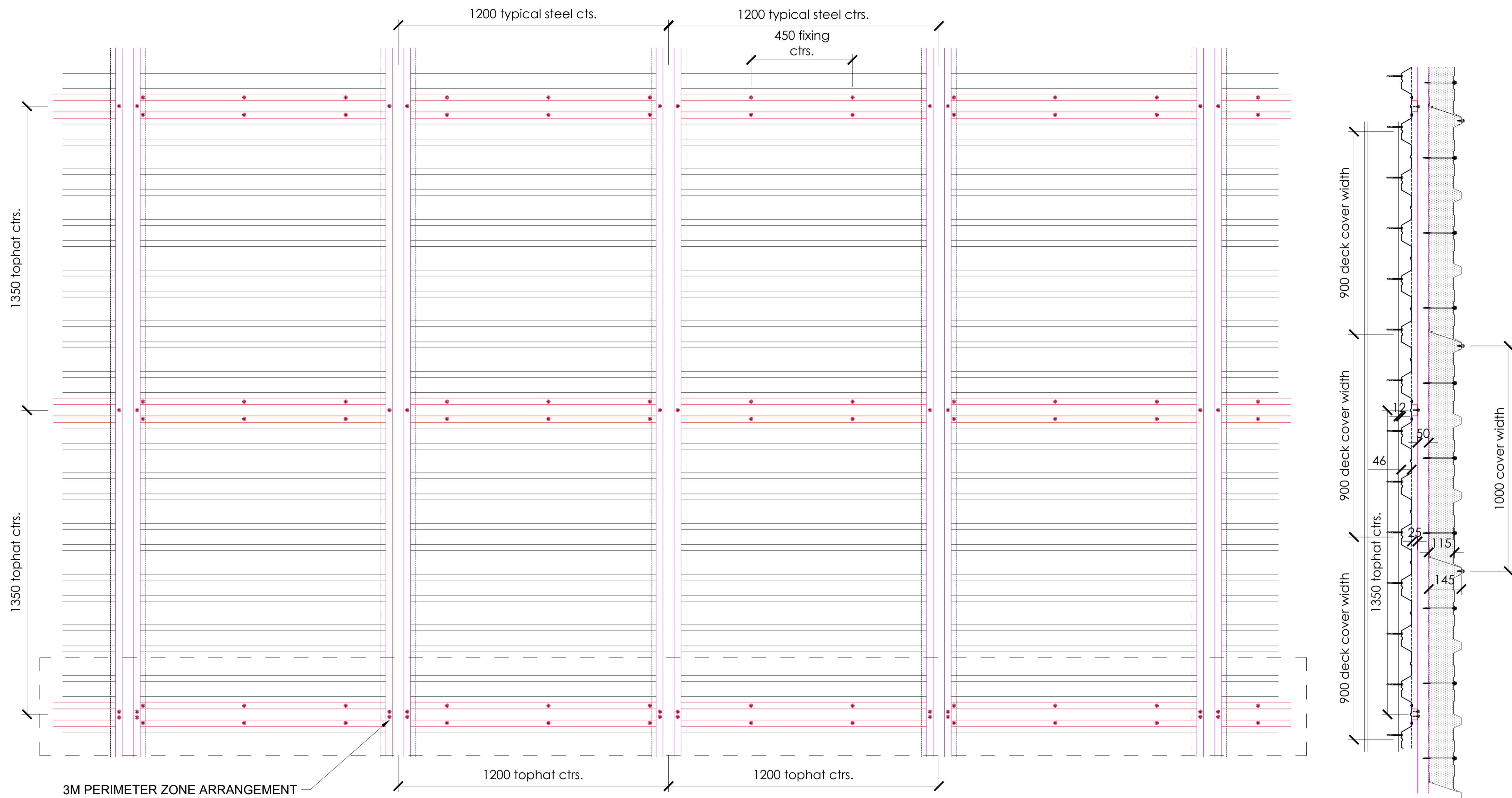
0.9MM THICK D46 STEEL DECK  
FIXED TO PRIMARY STEEL BEAMS  
AT EVERY TROUGH USING PAT  
SC9-20 SHOT FIRE PIN  
AT PRIMARY STEEL LOCATION

INTERNAL SECONDARY ROOF  
GUTTER PROFILE FIXED TO GALV  
TOP-HAT PROFILE AND D46  
ALUMINIUM DECK. STOPENDED AT  
GRID LOCATION TO HELP IDENTIFY  
ANY POTENTIAL WATER INGRESS.  
**PROFILE/OUTLET LOCATIONS TBC  
BY DESIGN TEAM 25MM DIA  
DOWNPIPES**

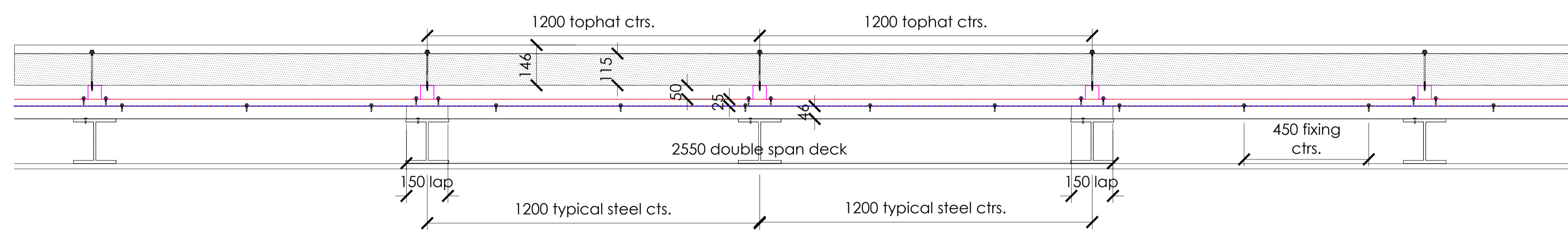
This file is the property of:

**KFK Design Ltd**  
Building Envelope Design

For permission to reproduce contact-  
[info@kfkdesignltd.co.uk](mailto:info@kfkdesignltd.co.uk)

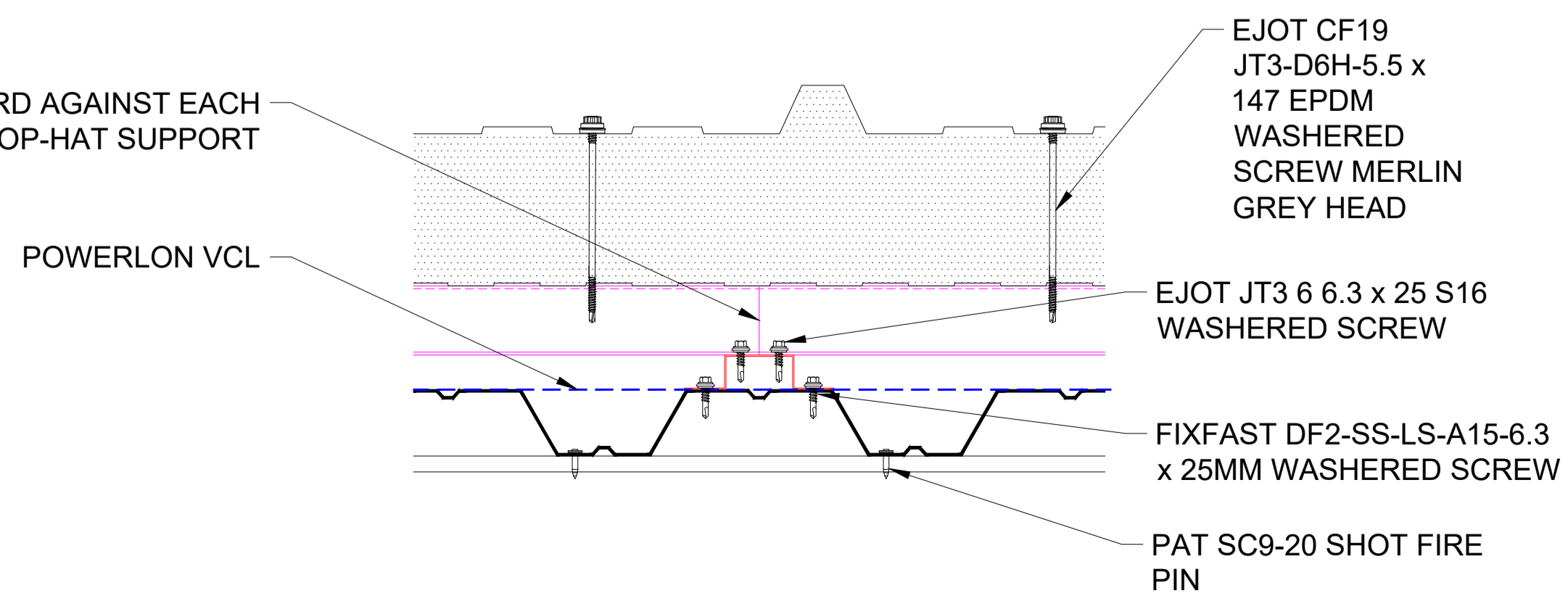


3M PERIMETER ZONE ARRANGEMENT



**ROOF BUILD-UP**  
 - PROPRIETARY PRIMARY STEEL BEAMS AT TYP 1200MM CTRS.  
 - 0.9MM THICK D46 STEEL DECK (SOLID) DOUBLE SPAN CONDITION FIXED TO PRIMARY STEEL BEAM USING 1 NO. PAT SC9-20 SHOT FIRE PIN AT EVERY TROUGH  
 - 30X25X50X25X30 X 2MM THICK S275 GRADE TOP-HAT SUPPORT RUNNING DOWN CROWN OF DECK AT 1350MM CTRS. ACROSS ROOF FIXED USING 1 NO. FIXFAST DF2-SS-LS-A15-6.3 x 25MM AT 450MM CTRS, 1 AT EACH SIDE OF TOP-HAT INTO CROWN.  
 - 30X50X50X50X30 X 2MM THICK S275 GRADE TOP-HAT FIXED TO SUB TOP-HATS USING 2 NO. EJOT JT3 6 6.3 x 25 S16 DIA TEK SCREWS FOR ROOF FIELD AREA AND 4 NO. FIXINGS TO 3M HIGH WIND LOAD PERIMETER ZONE ALL AT 1500MM CTRS.

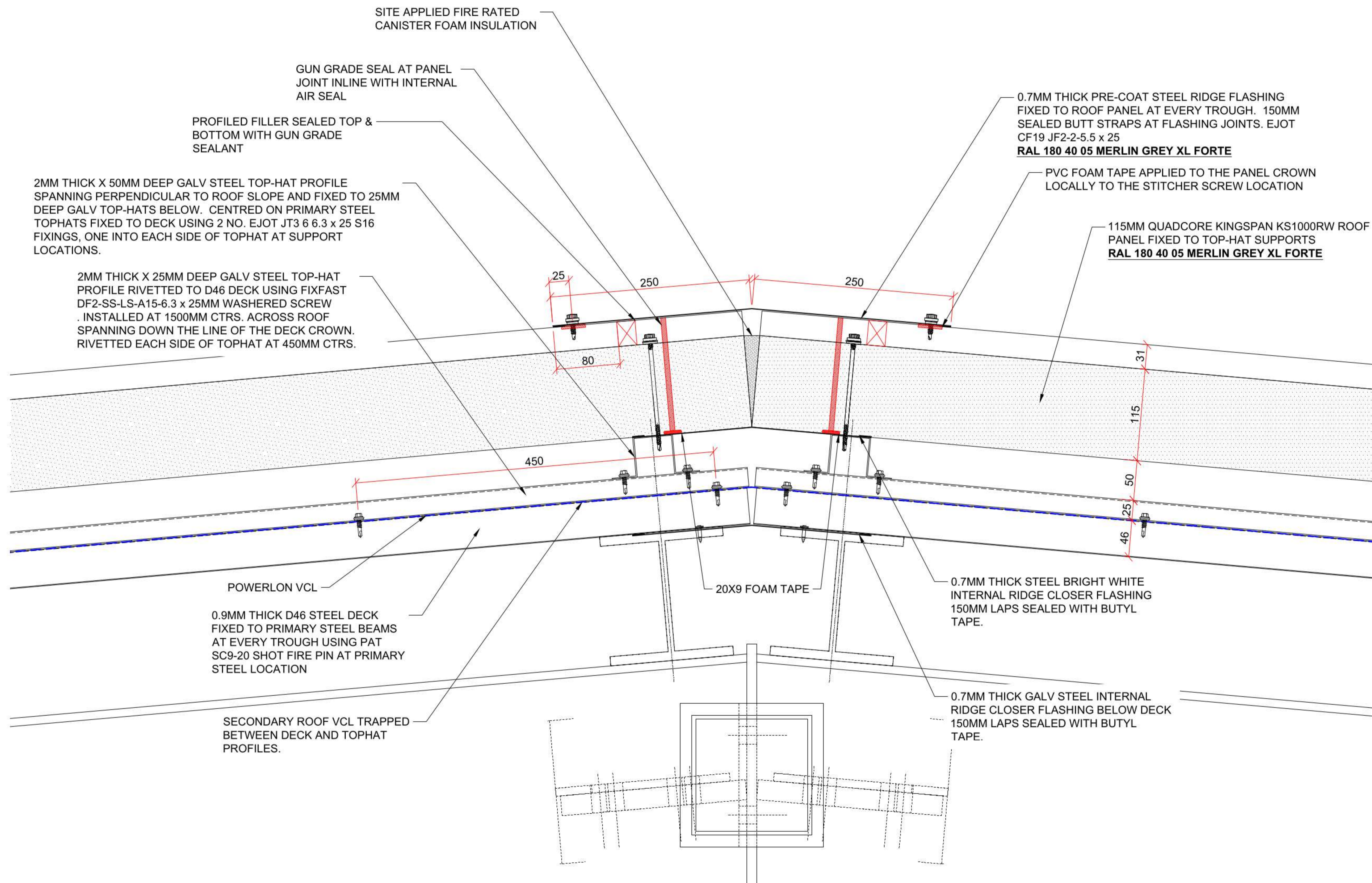
TOP-HATS BUTTED HARD AGAINST EACH OTHER CENTRED ON TOP-HAT SUPPORT BELOW



This file is the property of:

**KFK Design Ltd**  
 Building Envelope Design

For permission to reproduce contact:-  
[info@kfkdesignltd.co.uk](mailto:info@kfkdesignltd.co.uk)

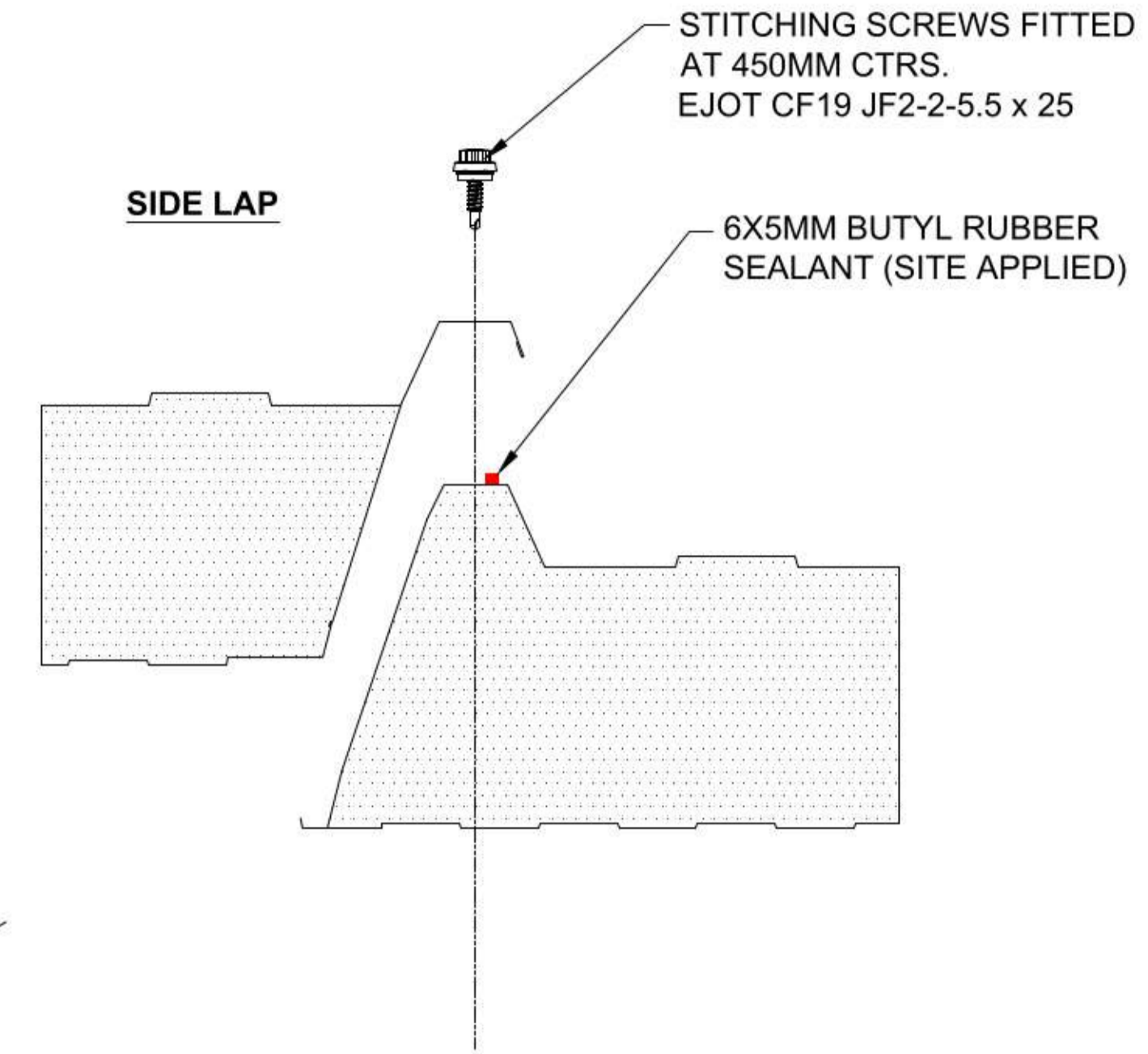
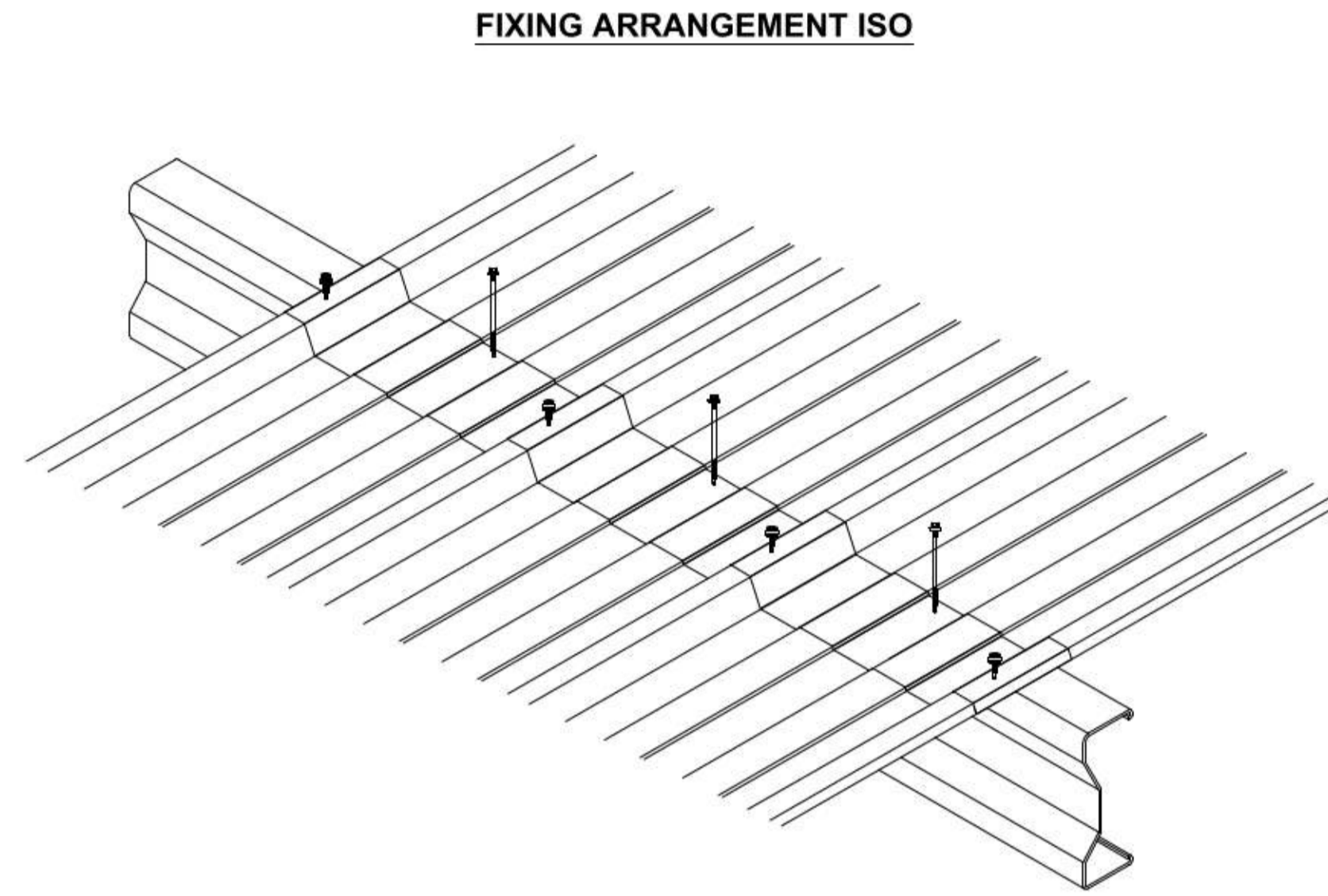
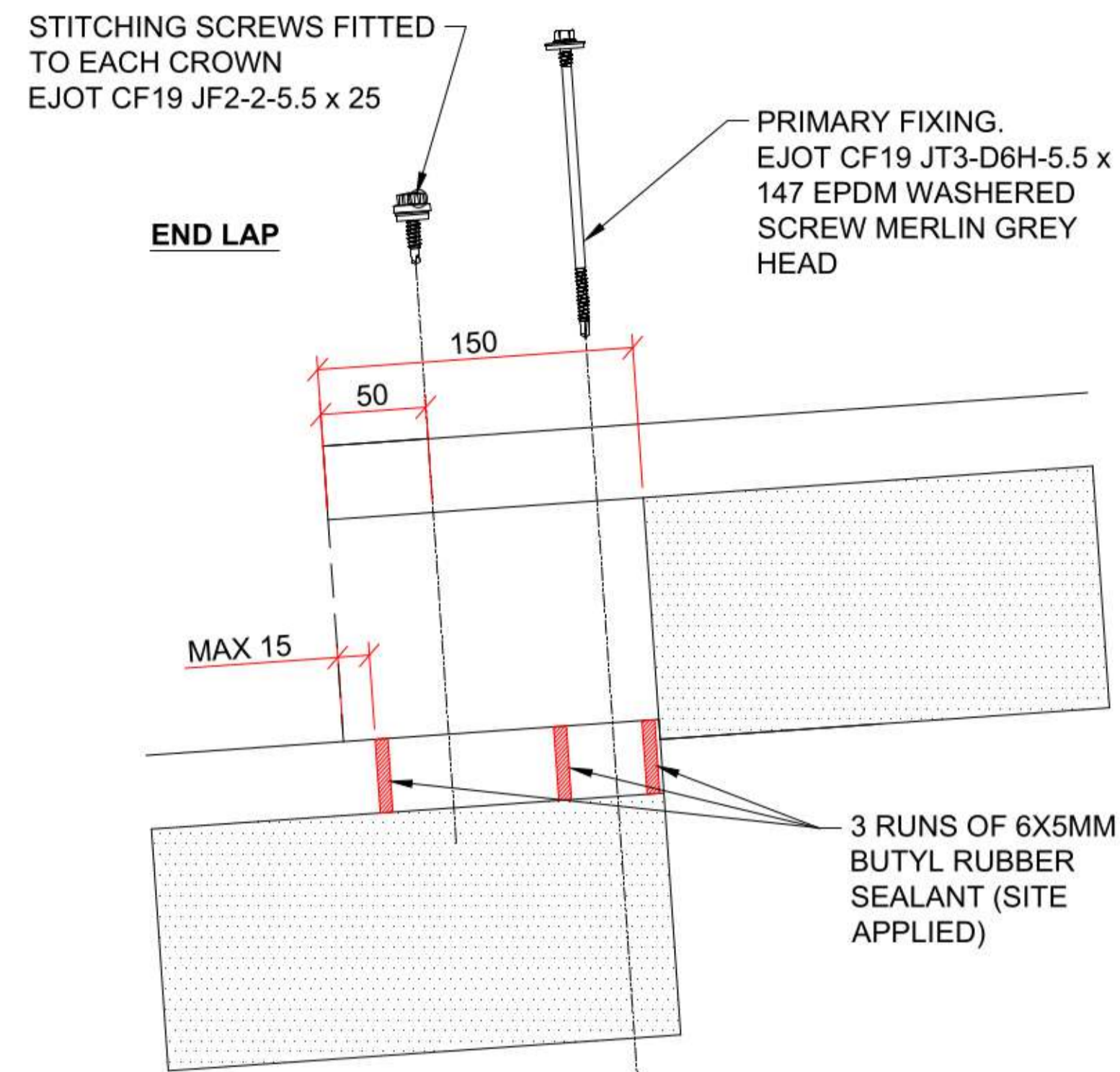


01 DATA HALL SECTION DETAIL - RIDGE DETAIL  
2803 SCALE 1: 5

This file is the property of:

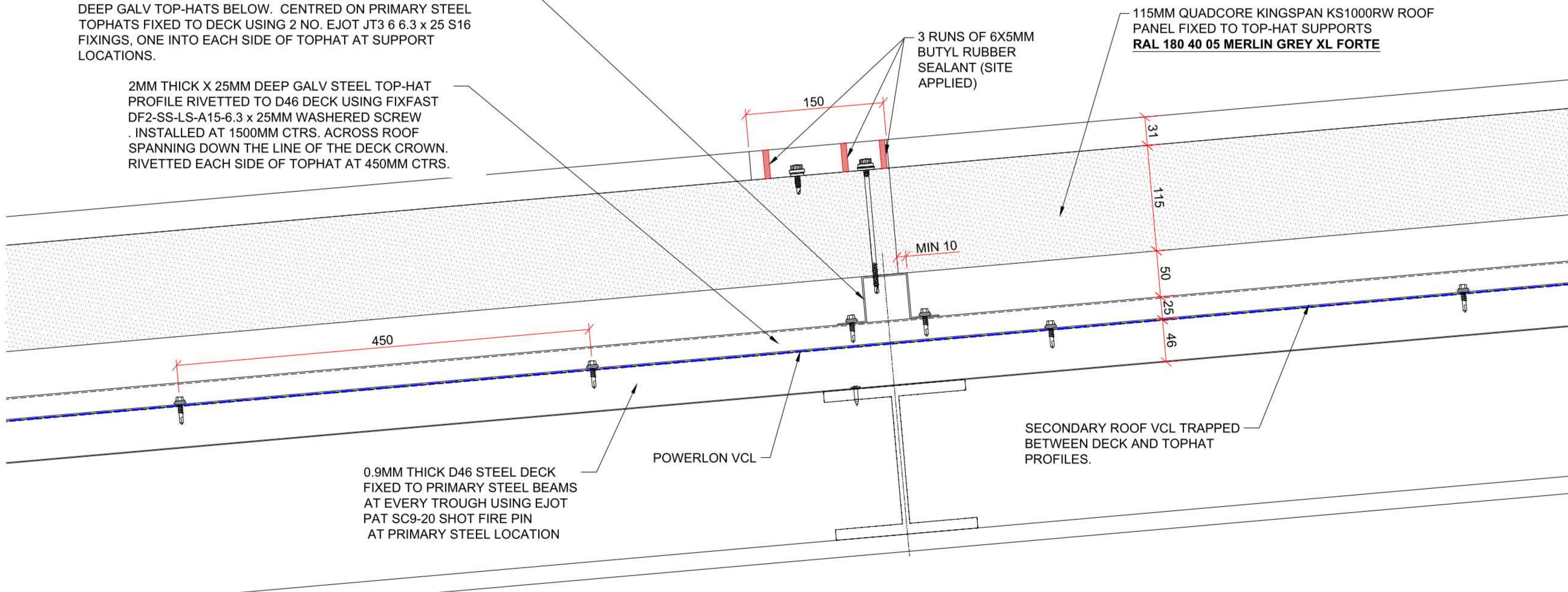
**KFK Design Ltd**  
Building Envelope Design

For permission to reproduce contact:  
[info@kfkdesignltd.co.uk](mailto:info@kfkdesignltd.co.uk)



2MM THICK X 50MM DEEP GALV STEEL TOP-HAT PROFILE SPANNING PERPENDICULAR TO ROOF SLOPE AND FIXED TO 25MM DEEP GALV TOP-HATS BELOW. CENTRED ON PRIMARY STEEL TOPHATS FIXED TO DECK USING 2 NO. EJOT JT3 6 6.3 x 25 S16 FIXINGS, ONE INTO EACH SIDE OF TOPHAT AT SUPPORT LOCATIONS.

2MM THICK X 25MM DEEP GALV STEEL TOP-HAT PROFILE RIVETTED TO D46 DECK USING FIXFAST DF2-SS-LS-A15-6.3 x 25MM WASHERED SCREW. INSTALLED AT 1500MM CTRS. ACROSS ROOF SPANNING DOWN THE LINE OF THE DECK CROWN. RIVETTED EACH SIDE OF TOPHAT AT 450MM CTRS.



This file is the property of:

**KFK Design Ltd**  
Building Envelope Design

For permission to reproduce contact:  
[info@kfkdesignltd.co.uk](mailto:info@kfkdesignltd.co.uk)

P018467-CRL-DC-ZZ-DR-X-2802

1.5MM THICK GALV STEEL COPING SUPPORTS FIXED TO PARAPET RAIL AND EACH OTHERS AT 450MM CTRS.

EPDM TO UNDERSIDE OF COPING.

70MM THICK PIR INSULATION TO U/S COPING.

A  
K

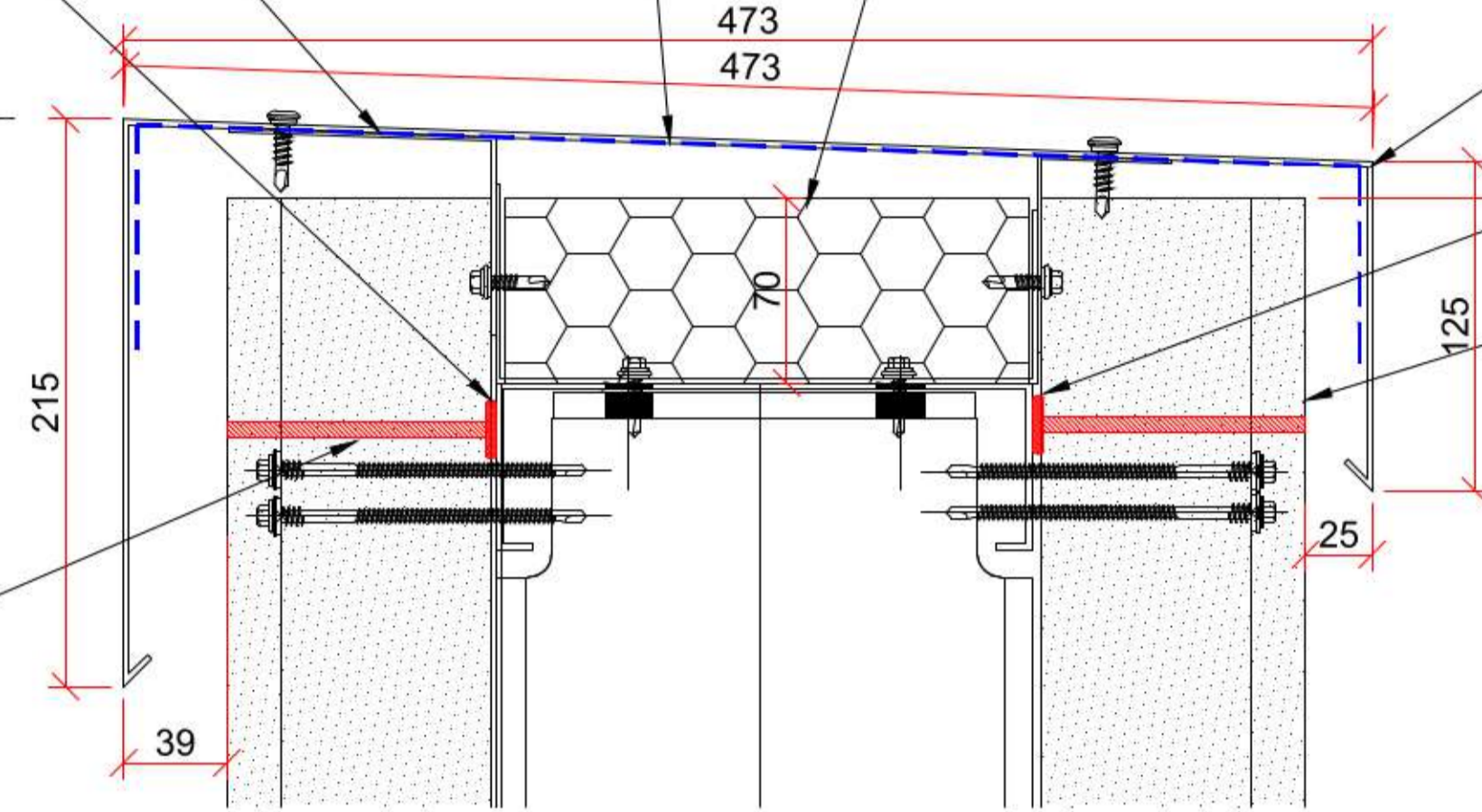
3MM THICK PPC ALUMINIUM COPING FIXED TO GALV STEEL COPING SUPPORT WHERE SHOWN AT 450MM CTRS. USING COLOUR MATCHED LOW PROFILE HEAD FIXINGS.  
**RAL 210 80 10 POWDER BLUE XL FORTE**

20X9 FOAM TAPE

20X9 FOAM TAPE

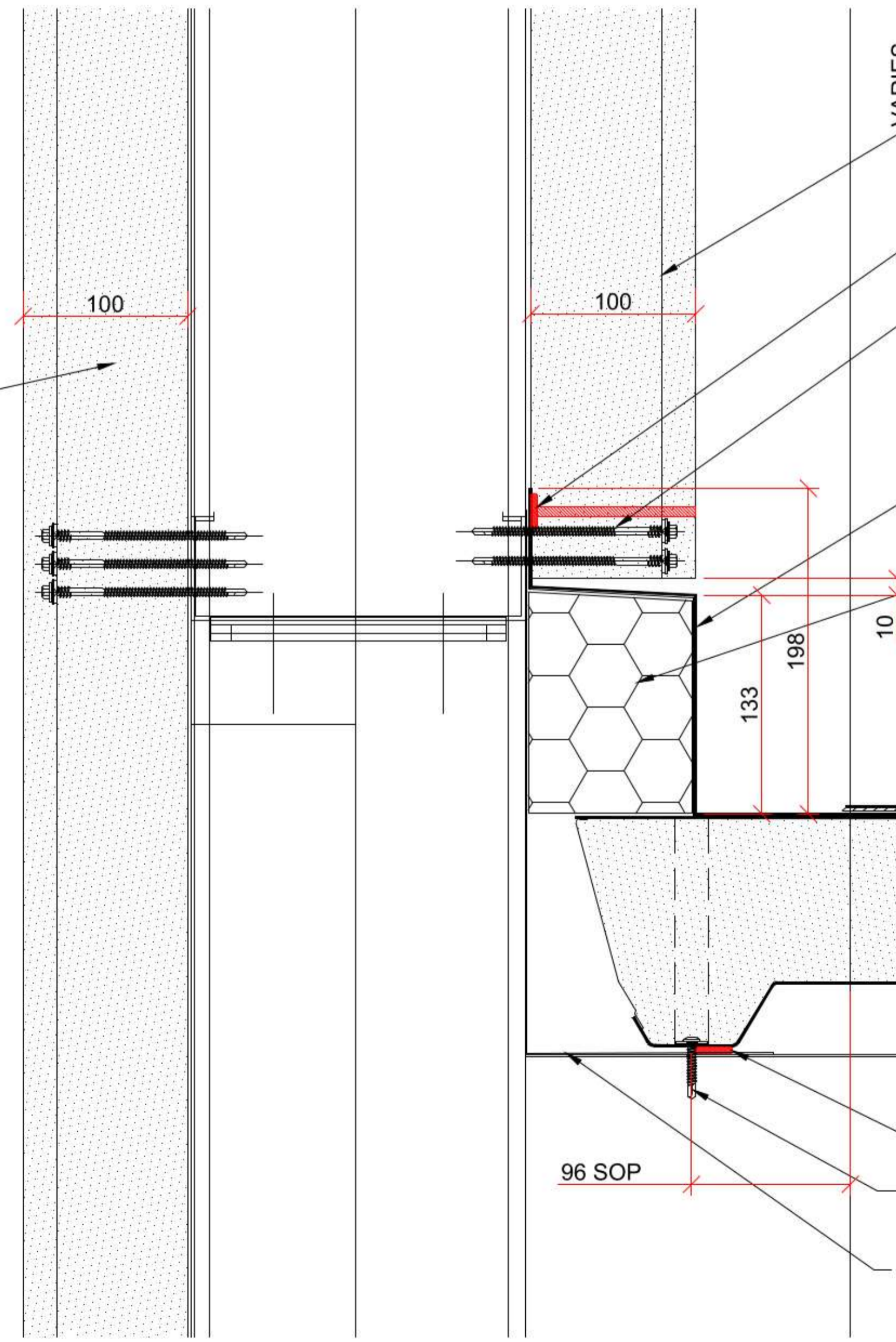
GUN GRADE SEAL AT PANEL JOINT INLINE WITH INTERNAL AIR SEAL

▽ + 21.756



GUN GRADE SEAL AT PANEL JOINT INLINE WITH INTERNAL AIR SEAL

100MM QUADCORE KINGSPAN KS1000MR VERTICALLY LAID AWP FIXED TO PROPRIETARY CLADDING RAILS USING JT3 D6H 5.5 x 107 S16. 3 NO. AT INTERMEDIATES & 2 NO. AT PANEL ENDS  
**RAL 210 80 10 POWDER BLUE XL FORTE**



VARIES

100MM QUADCORE KINGSPAN KS1000MR VERTICALLY LAID AWP FIXED TO PROPRIETARY CLADDING RAILS USING JT3 D6H 5.5 x 107 S16. 2 NO. AT PANEL ENDS  
**RAL 210 80 10 POWDER BLUE XL FORTE**

20X9 FOAM TAPE

GUN GRADE SEAL AT PANEL JOINT INLINE WITH INTERNAL AIR SEAL

MEMBRANE COATED GALVANISED STEEL UPSTAND FLASHING FIXED THRU PANEL AND INTO CROWN AT U/S OF PANEL, AND JOINTS SEALED WITH WELDING STRIP

SITE APPLIED LPCB / FM CERTIFIED PIR INSULATION BOARD ANY GAPS FILLED WITH FIRE RATED CANISTER INSULATION

PVC MEMBRANE STRIP

SELF-DRILLING SELF-TAPPING COUNTER SUNK RAISED HEAD HIGH THREAD FASTENER AT MAX 200MM CENTRES

96 SOP

20X9 FOAM TAPE

SELF-CORING PRIMARY FIXINGS WITH WASHER 1NO. PER TROUGH

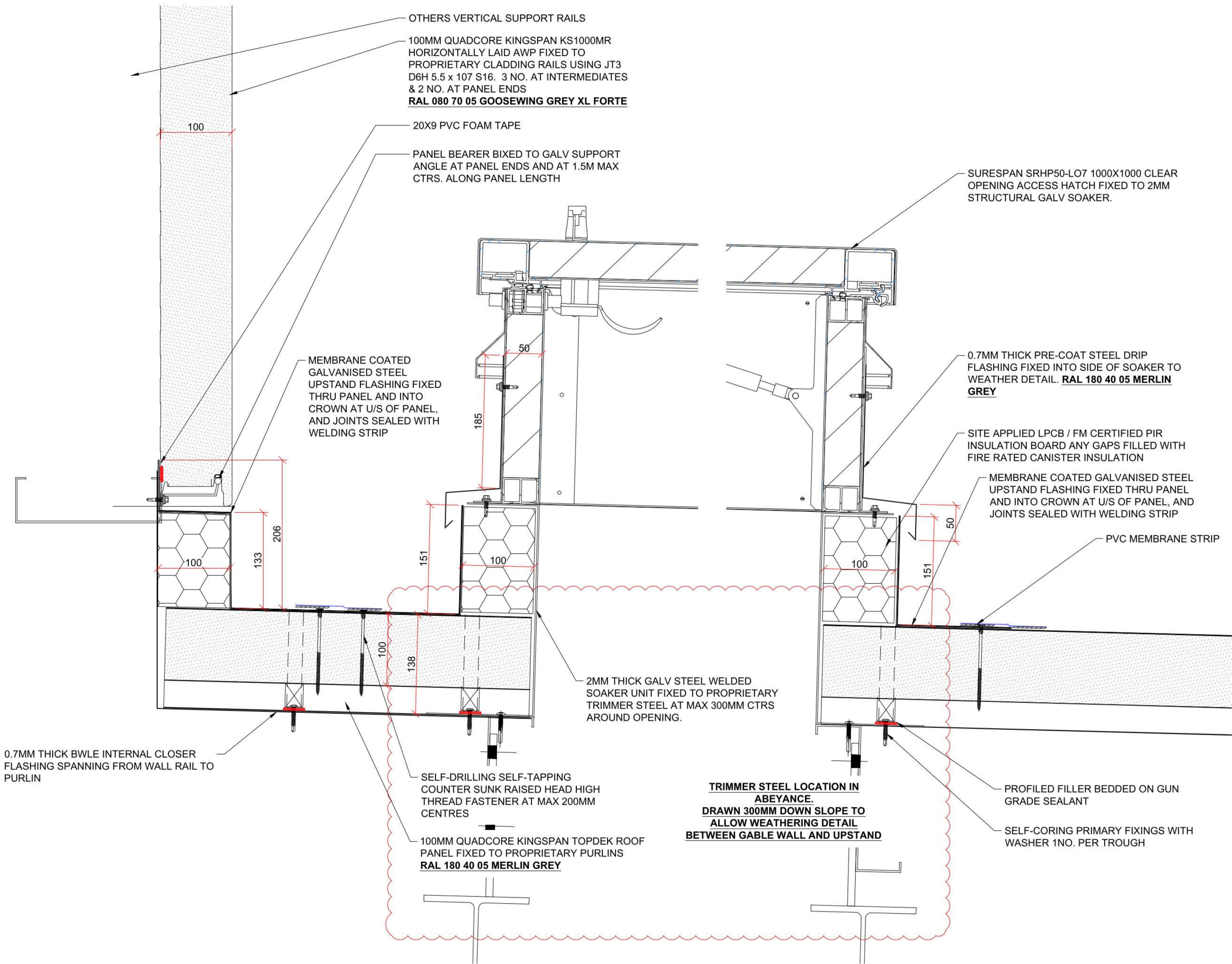
0.7MM THICK BWLE INTERNAL CLOSER FLASHING SPANNING FROM WALL RAIL TO PURLIN

100MM QUADCORE KINGSPAN TOPDEK ROOF PANEL FIXED TO PROPRIETARY PURLINS  
**RAL 180 40 05 MERLIN GREY**

This file is the property of:

**KFK Design Ltd**  
Building Envelope Design

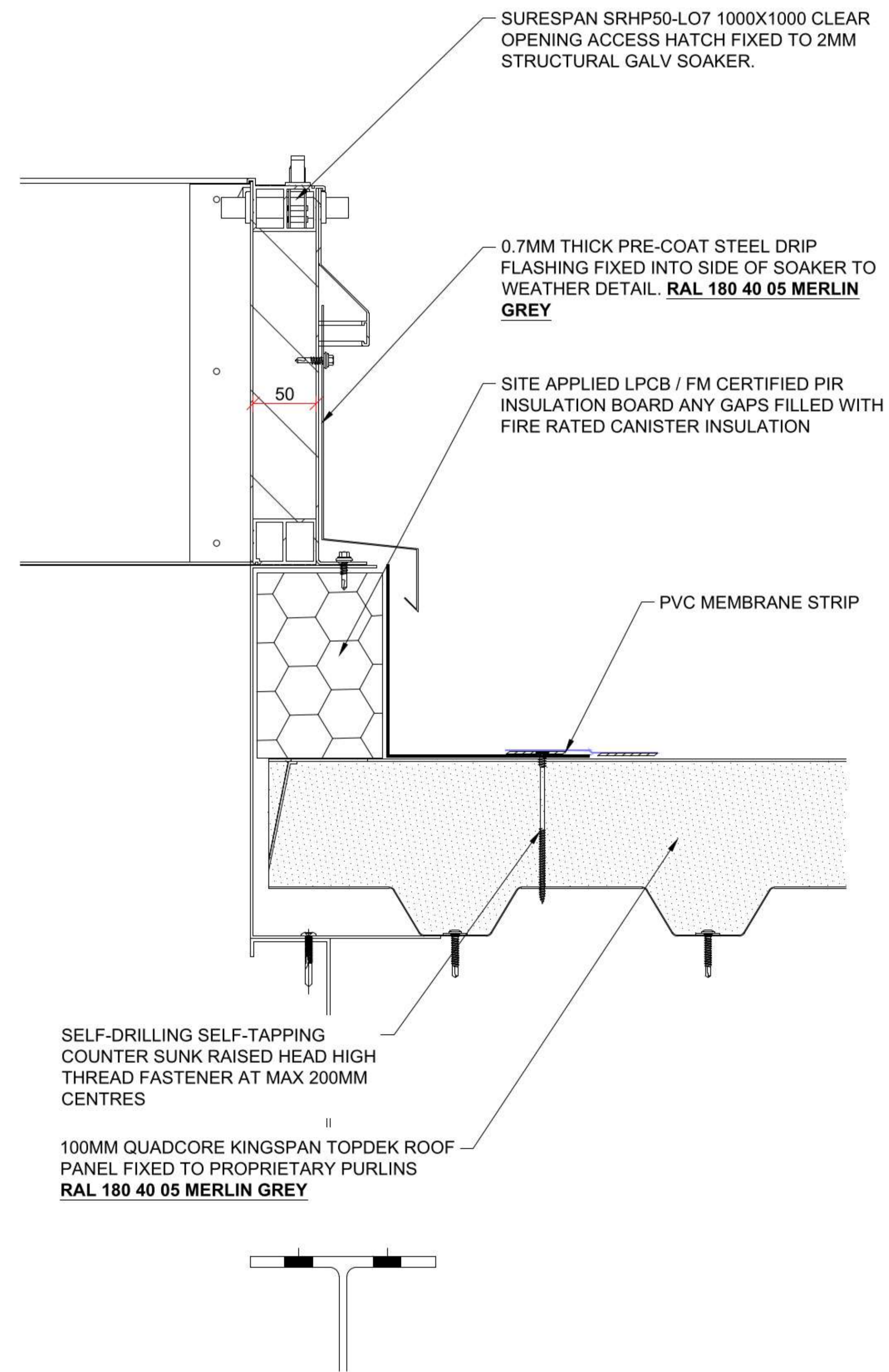
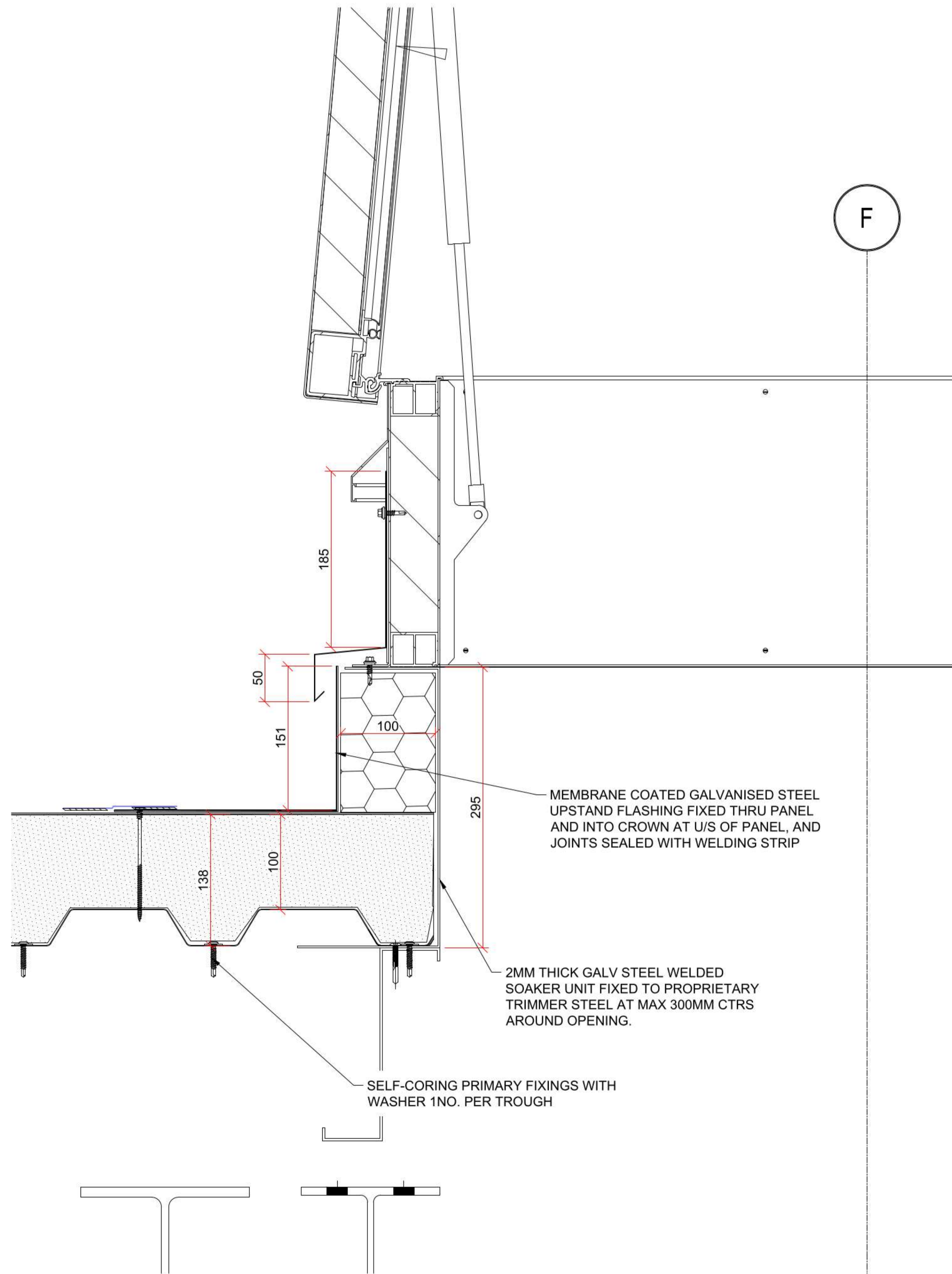
For permission to reproduce contact:  
[info@kfkdesignltd.co.uk](mailto:info@kfkdesignltd.co.uk)



This file is the property of:

**KFK Design Ltd**  
Building Envelope Design

For permission to reproduce contact-  
[info@kfkdesignltd.co.uk](mailto:info@kfkdesignltd.co.uk)



MEMBRANE COATED GALVANISED STEEL UPSTAND FLASHING FIXED THRU PANEL AND INTO CROWN AT U/S OF PANEL, AND JOINTS SEALED WITH WELDING STRIP

2MM THICK GALV STEEL WELDED SOAKER UNIT FIXED TO PROPRIETARY TRIMMER STEEL AT MAX 300MM CTRS AROUND OPENING.

SELF-CORING PRIMARY FIXINGS WITH WASHER 1NO. PER TROUGH

SURESPAN SRHP50-LO7 1000X1000 CLEAR OPENING ACCESS HATCH FIXED TO 2MM STRUCTURAL GALV SOAKER.

0.7MM THICK PRE-COAT STEEL DRIP FLASHING FIXED INTO SIDE OF SOAKER TO WEATHER DETAIL. **RAL 180 40 05 MERLIN GREY**

SITE APPLIED LPCB / FM CERTIFIED PIR INSULATION BOARD ANY GAPS FILLED WITH FIRE RATED CANISTER INSULATION

PVC MEMBRANE STRIP

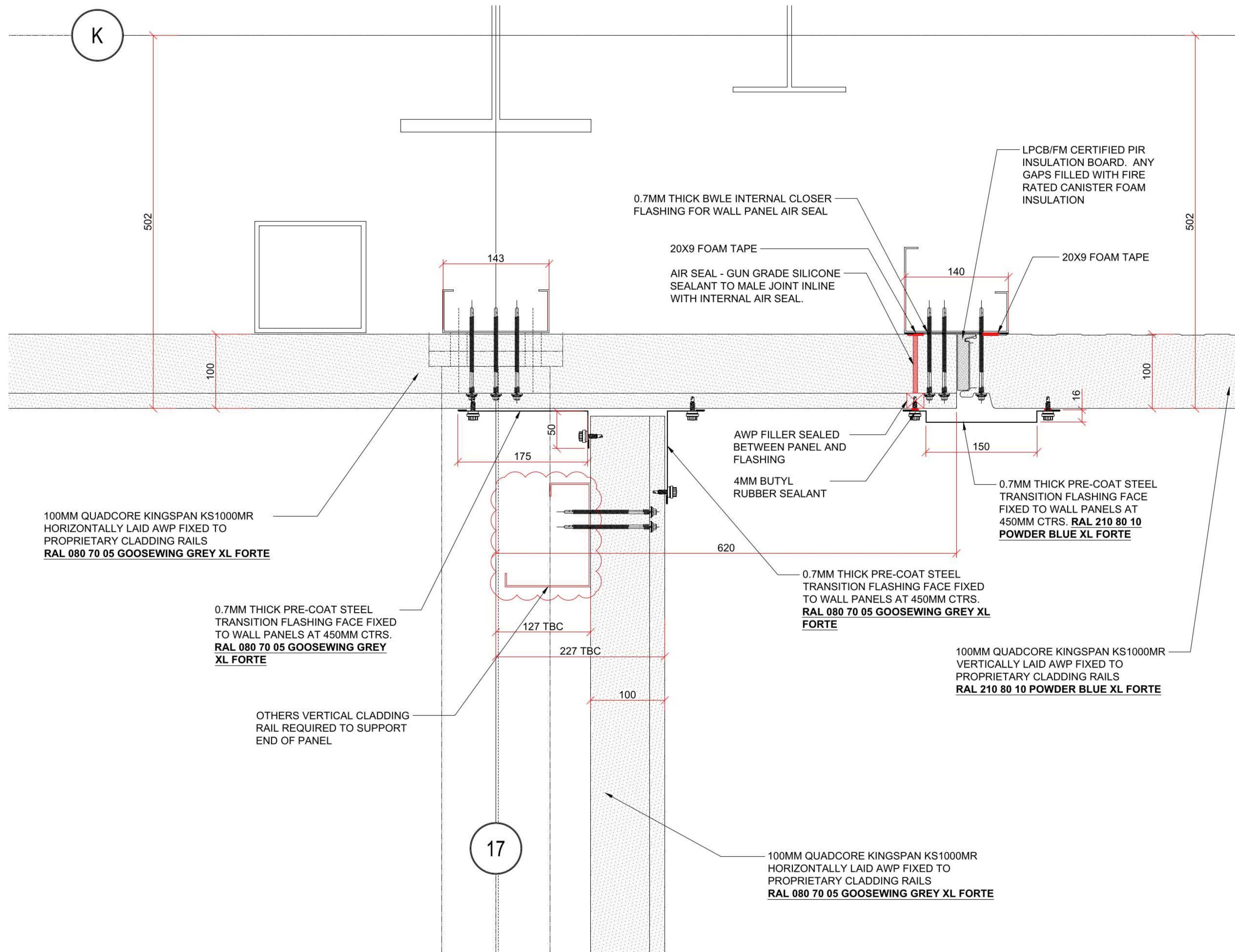
SELF-DRILLING SELF-TAPPING COUNTER SUNK RAISED HEAD HIGH THREAD FASTENER AT MAX 200MM CENTRES

100MM QUADCORE KINGSPAN TOPDEK ROOF PANEL FIXED TO PROPRIETARY PURLINS **RAL 180 40 05 MERLIN GREY**

This File is the property of:

**KFK Design Ltd**  
Building Envelope Design

For permission to reproduce contact:  
[info@kfkdesignltd.co.uk](mailto:info@kfkdesignltd.co.uk)



100MM QUADCORE KINGSPAN KS1000MR  
HORIZONTALLY LAID AWP FIXED TO  
PROPRIETARY CLADDING RAILS  
**RAL 080 70 05 GOOSEWING GREY XL FORTE**

0.7MM THICK PRE-COAT STEEL  
TRANSITION FLASHING FACE FIXED  
TO WALL PANELS AT 450MM CTRS.  
**RAL 080 70 05 GOOSEWING GREY  
XL FORTE**

OTHERS VERTICAL CLADDING  
RAIL REQUIRED TO SUPPORT  
END OF PANEL

17

100MM QUADCORE KINGSPAN KS1000MR  
HORIZONTALLY LAID AWP FIXED TO  
PROPRIETARY CLADDING RAILS  
**RAL 080 70 05 GOOSEWING GREY XL FORTE**

0.7MM THICK BWLE INTERNAL CLOSER  
FLASHING FOR WALL PANEL AIR SEAL

20X9 FOAM TAPE

AIR SEAL - GUN GRADE SILICONE  
SEALANT TO MALE JOINT INLINE  
WITH INTERNAL AIR SEAL.

LPCB/FM CERTIFIED PIR  
INSULATION BOARD. ANY  
GAPS FILLED WITH FIRE  
RATED CANISTER FOAM  
INSULATION

20X9 FOAM TAPE

AWP FILLER SEALED  
BETWEEN PANEL AND  
FLASHING  
4MM BUTYL  
RUBBER SEALANT

0.7MM THICK PRE-COAT STEEL  
TRANSITION FLASHING FACE  
FIXED TO WALL PANELS AT  
450MM CTRS. **RAL 210 80 10  
POWDER BLUE XL FORTE**

0.7MM THICK PRE-COAT STEEL  
TRANSITION FLASHING FACE FIXED  
TO WALL PANELS AT 450MM CTRS.  
**RAL 080 70 05 GOOSEWING GREY XL  
FORTE**

100MM QUADCORE KINGSPAN KS1000MR  
VERTICALLY LAID AWP FIXED TO  
PROPRIETARY CLADDING RAILS  
**RAL 210 80 10 POWDER BLUE XL FORTE**

RE  
P02  
P01

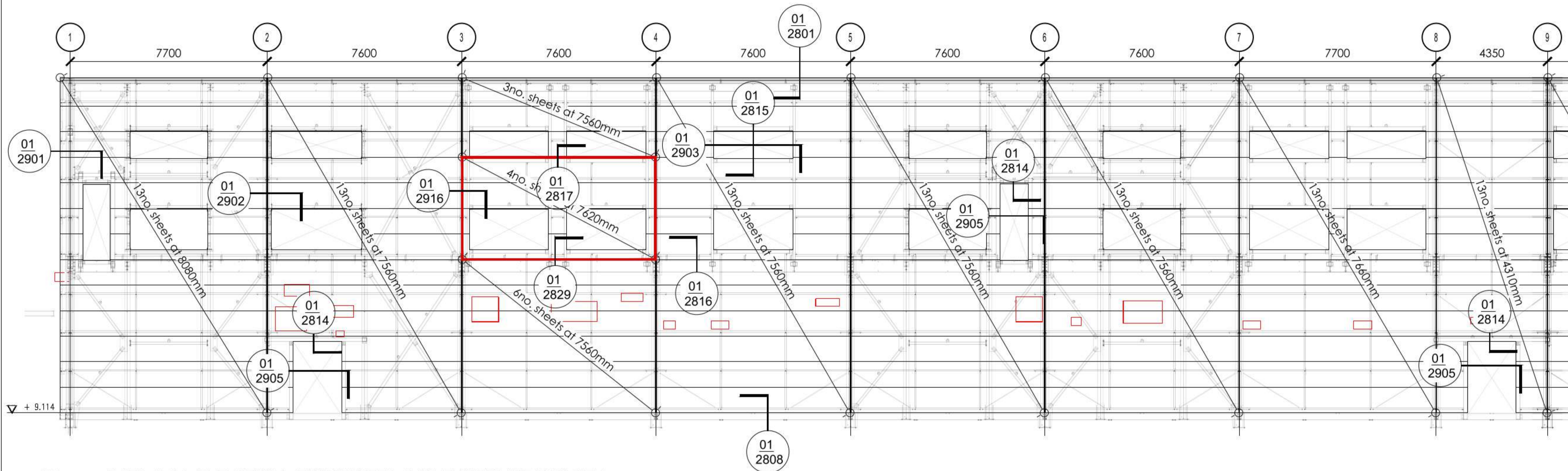
For permission to reproduce contact:  
[info@kfkdesignltd.co.uk](mailto:info@kfkdesignltd.co.uk)

**KFK Design Ltd**  
Building Envelope Design

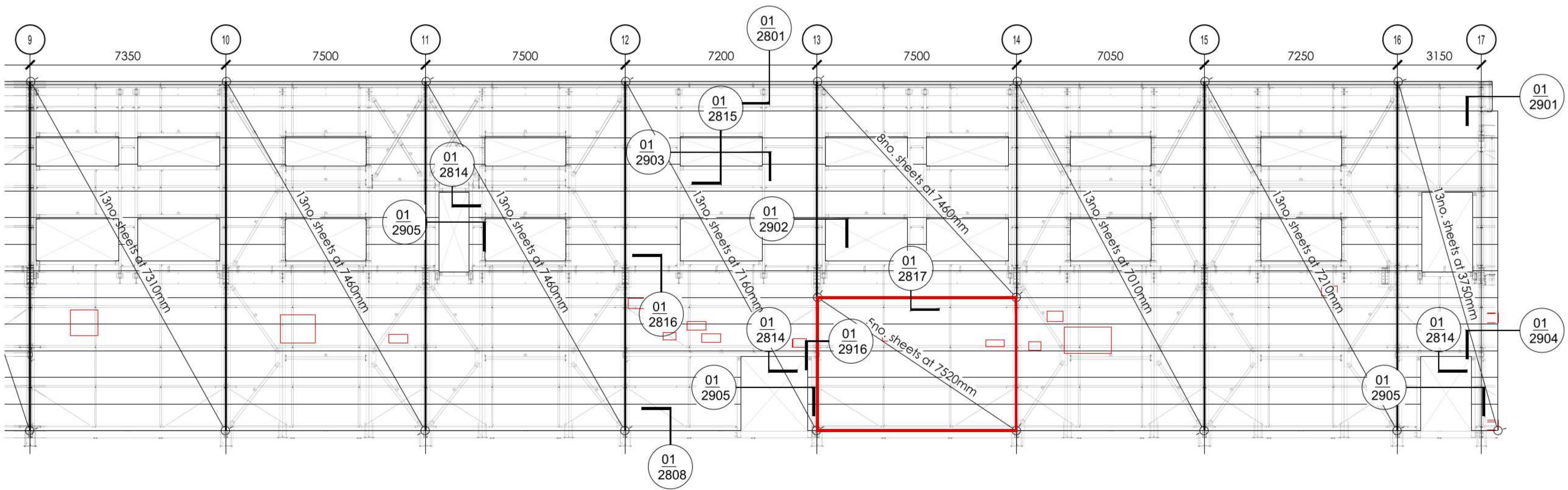
This file is the property of:

PU 10407-URL-DC-ZZ-DR-A-2904






01 DATA HALL ELEVATION - TOP SHEET LAYOUT GRIDLINE K PART 1  
2201 SCALE 1: 175



02 DATA HALL ELEVATION - TOP SHEET LAYOUT GRIDLINE K PART 2  
2201 SCALE 1: 175

 REMOVABLE SECTIONS OF WALL PANEL AS REQUESTED BY MCL

S
RE
P02
P01
C
F
D
C
T
A
A
D
D
P1

This file is the property of:  
**KFK Design Ltd**  
Building Envelope Design  
For permission to reproduce contact:  
[info@kfkdigital.co.uk](mailto:info@kfkdigital.co.uk)